



SERENIA DISTRICT  
AT JUMEIRAH ISLANDS



EAST  
RESIDENCE  
2

FLOOR PLANS  
BOOKLET



 EAST  
RESIDENCE 2

---

EVEN FLOORS

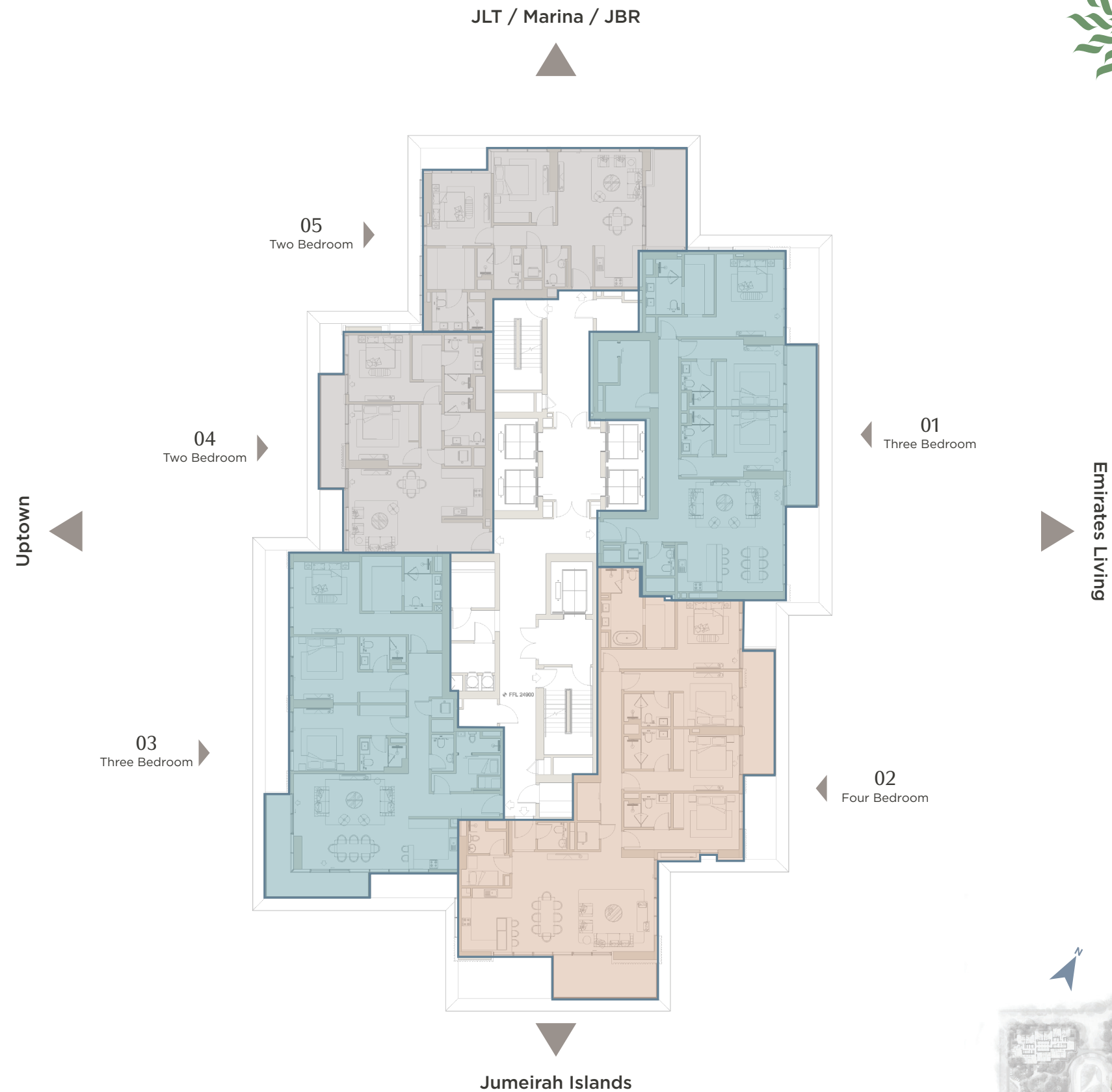




PALMA<sup>TM</sup>  
DEVELOPMENT



SERENIA DISTRICT  
AT JUMEIRAH ISLANDS



KEY PLAN



EAST  
RESIDENCE 2

EVEN FLOORS

All drawings and dimensions are approximate. Drawings are not to scale and are subject to change without notice. The developer reserves the right to make revisions. The units are measured at typical floor in the building and columns may vary in size depending on the floor level. The furnishings and accessories shown are for representation only. The length and width of the balcony varies depending on which floor and which orientation the unit is located.



## EAST RESIDENCE 2

Even | Full floor



**Internal area**  
**9,123 sq.ft** (848 sq.m)



**Terrace area**  
**1,044 sq.ft** (97 sq.m)



**Total area**  
**10,167 sq.ft** (945 sq.m)

## FLOOR COMPOSITION

**Total 5 units/floor**



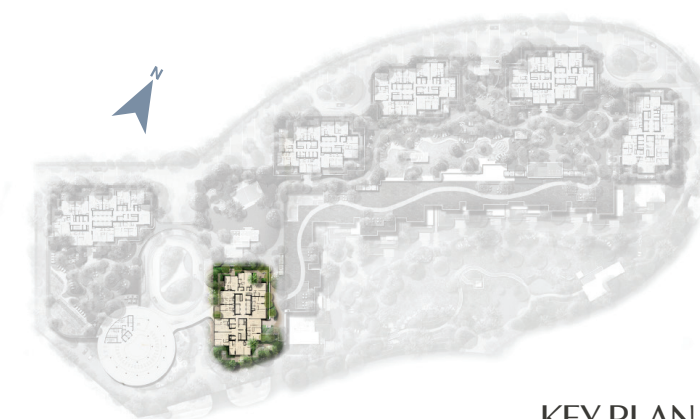
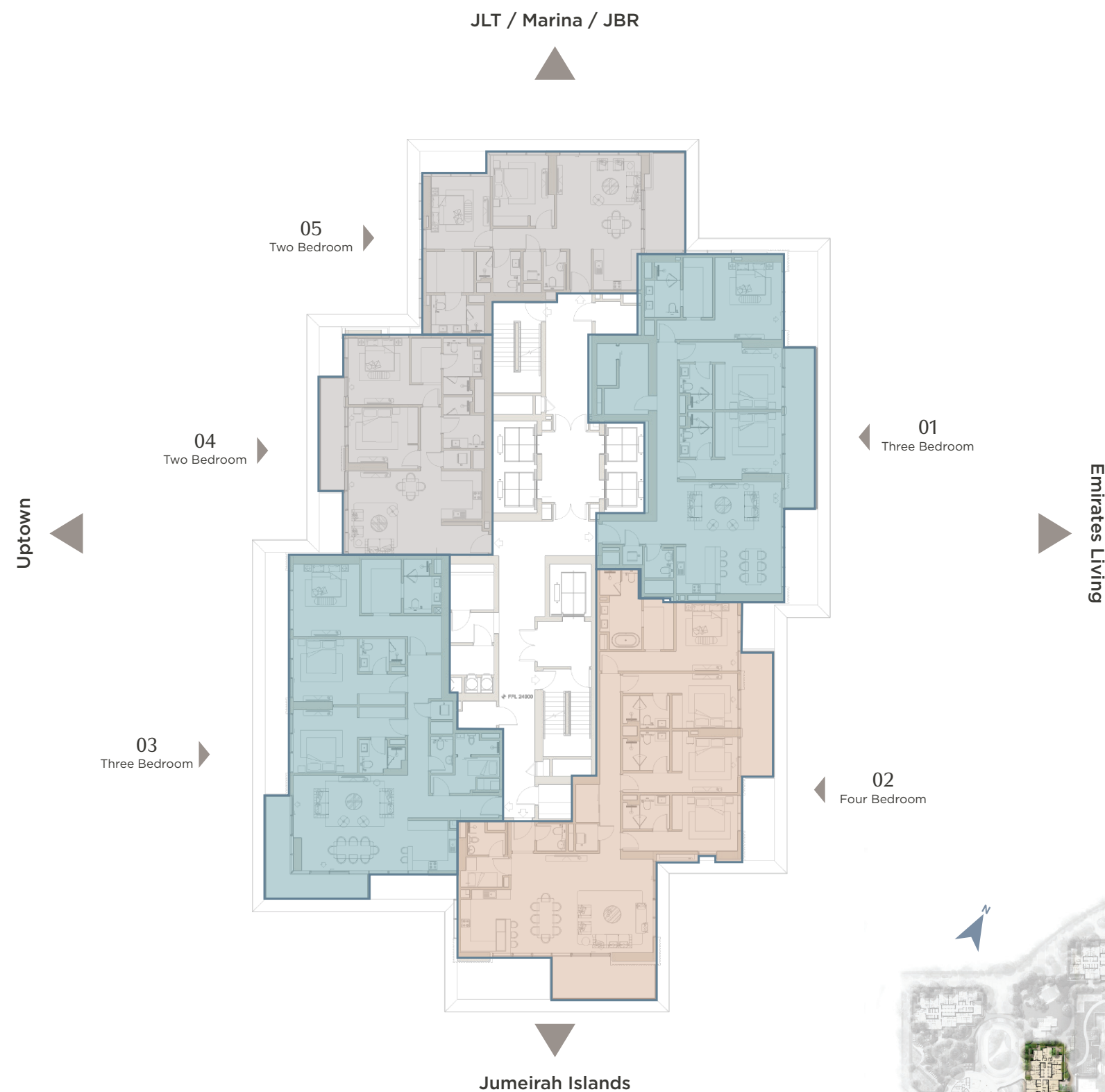
**2 Bedroom**  
**2 Units**



**3 Bedroom**  
**2 Units**



**4 Bedroom**  
**1 Unit**



KEY PLAN



## EAST RESIDENCE 2

### Type 01A | Three bedrooms



**Internal area**  
**2,035 sq.ft** (189 sq.m)



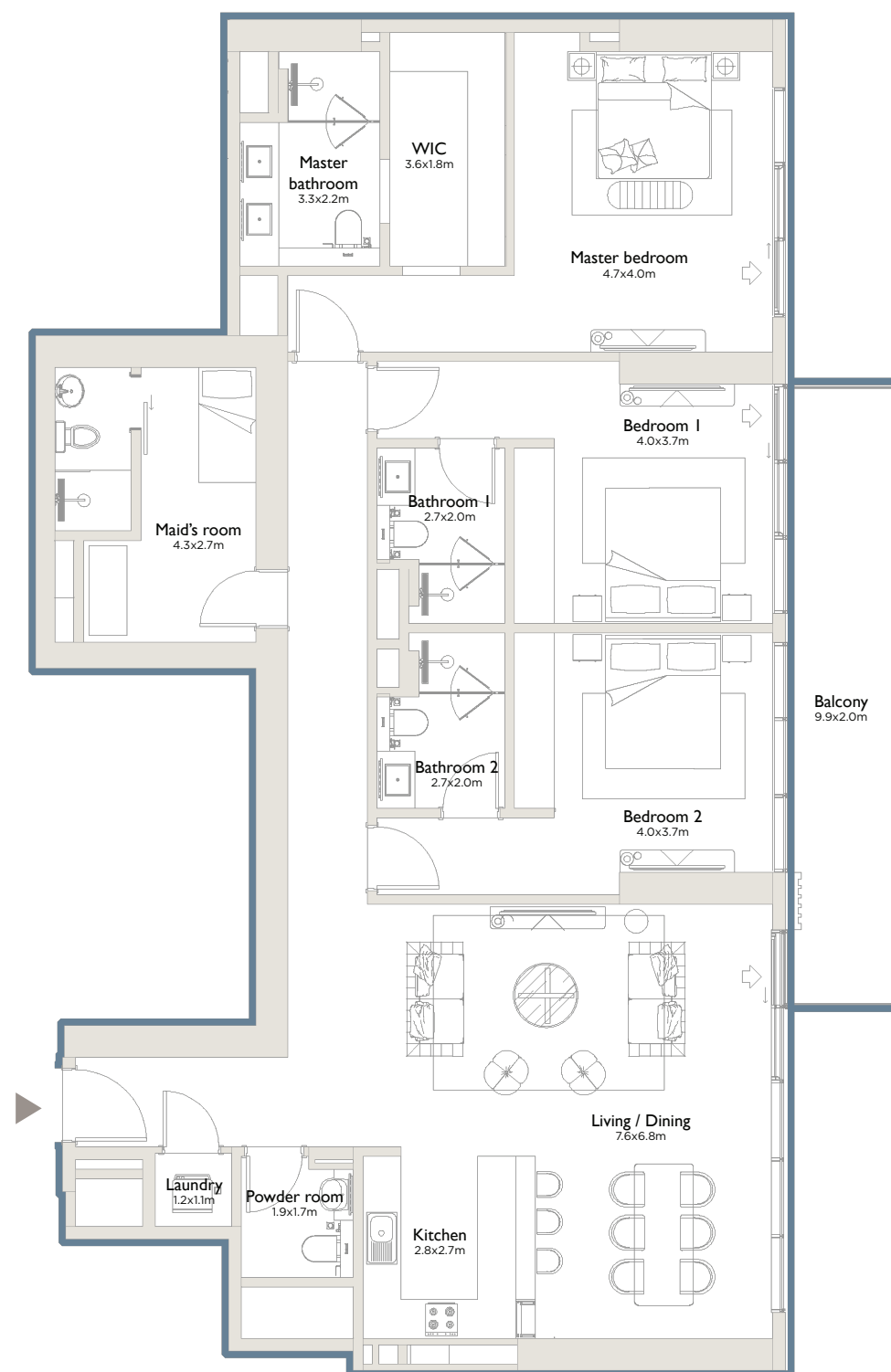
**Terrace area**  
**213 sq.ft** (20 sq.m)



**Total area**  
**2,248 sq.ft** (209 sq.m)

Type A - Even floors | Type B - Odd floors | Type C - Garden

## KEY PLAN



All drawings and dimensions are approximate. Drawings are not to scale and are subject to change without notice. The developer reserves the right to make revisions. The units are measured at typical floor in the building and columns may vary in size depending on the floor level. The furnishings and accessories shown are for representation only. The length and width of the balcony varies depending on which floor and which orientation the unit is located.

## EAST RESIDENCE 2

Type 02A | **Four bedrooms**

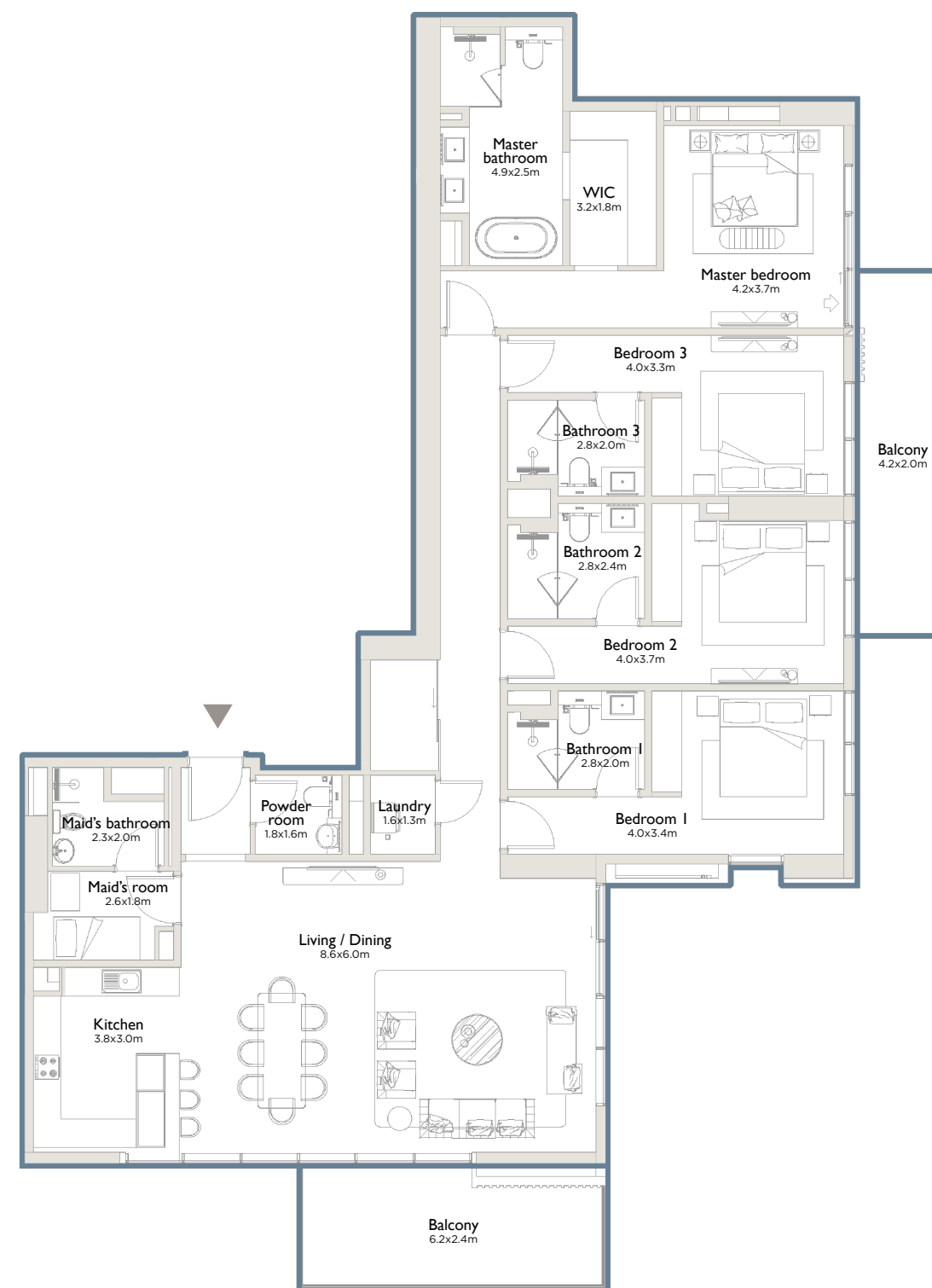
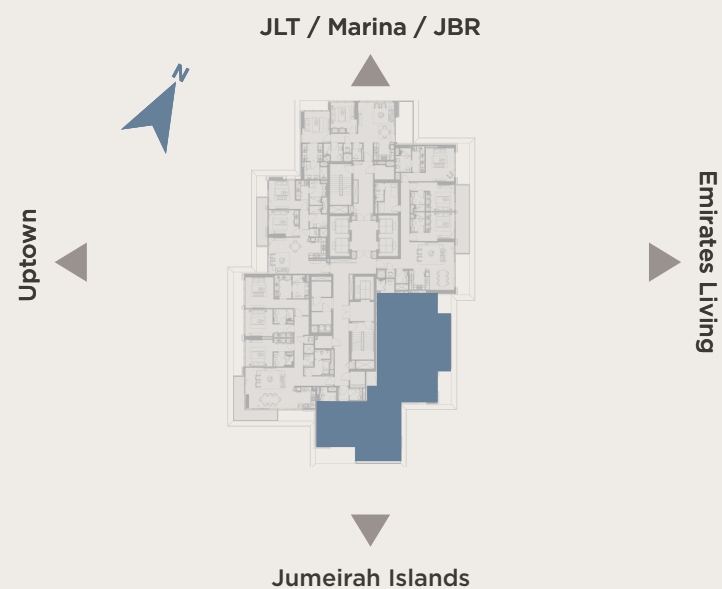
**Internal area**  
2,486 sq.ft (231 sq.m)

**Terrace area**  
349 sq.ft (32 sq.m)

**Total area**  
2,835 sq.ft (263 sq.m)

Type A - Even floors | Type B - Odd floors | Type C - Garden

## KEY PLAN



All drawings and dimensions are approximate. Drawings are not to scale and are subject to change without notice. The developer reserves the right to make revisions. The units are measured at typical floor in the building and columns may vary in size depending on the floor level. The furnishings and accessories shown are for representation only. The length and width of the balcony varies depending on which floor and which orientation the unit is located.





## EAST RESIDENCE 2

Type 03A | **Three bedrooms**



**Internal area**  
**2,120 sq.ft** (197 sq.m)



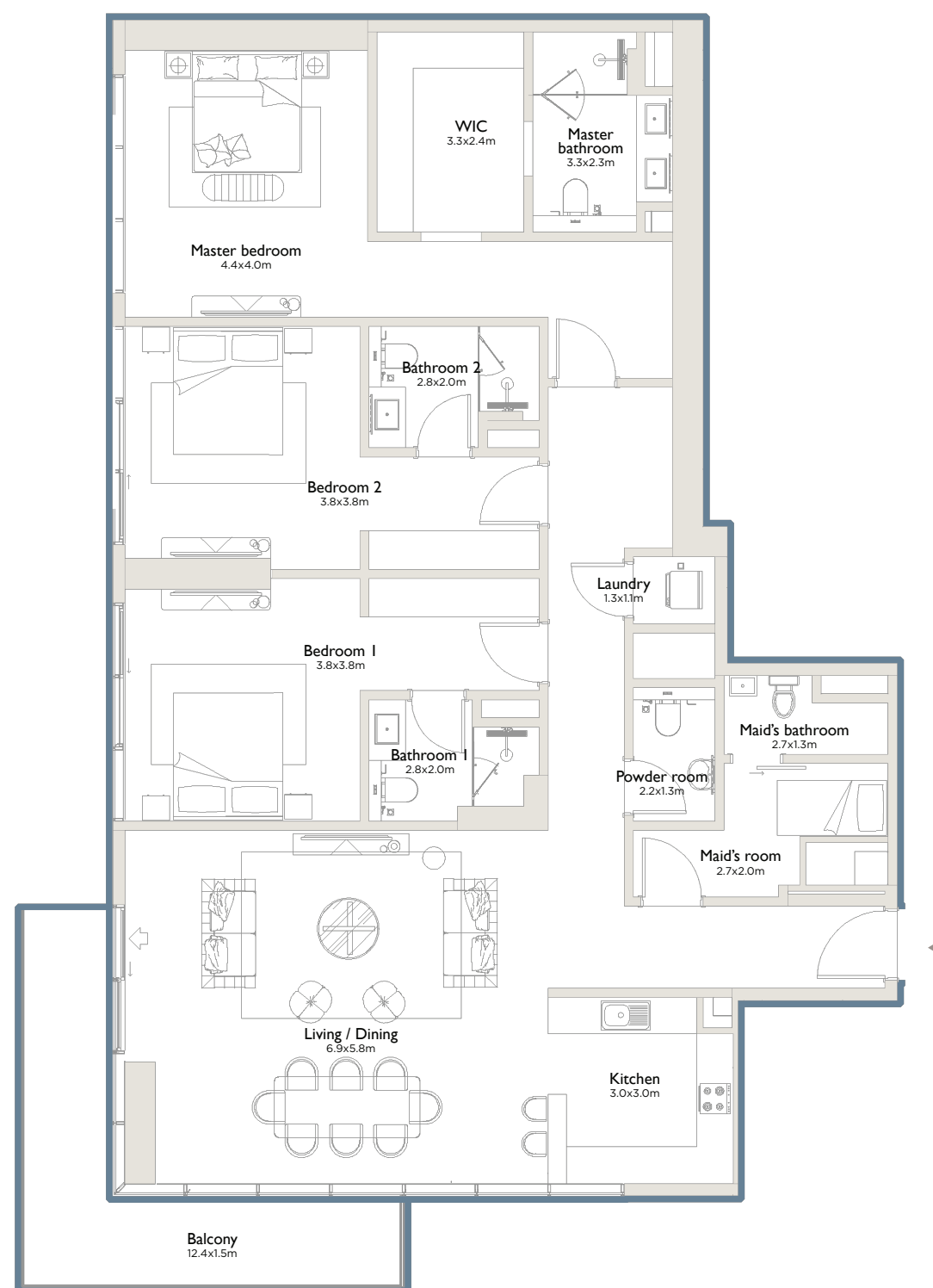
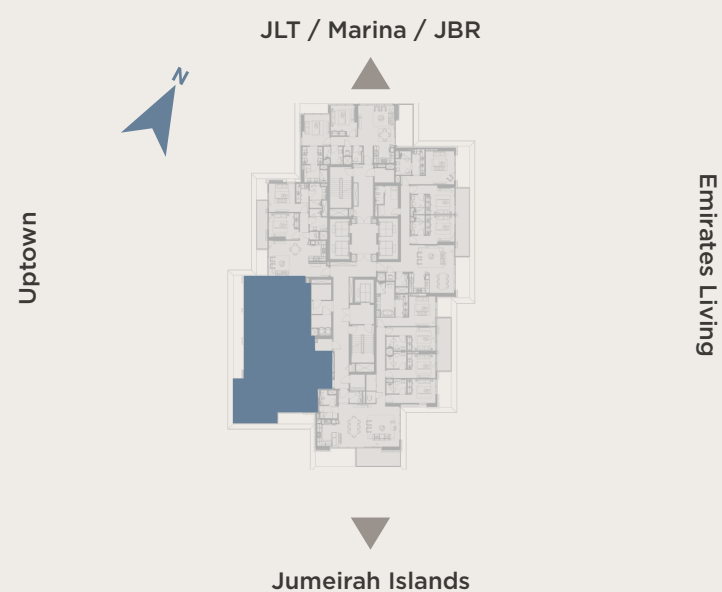
**Terrace area**  
**186 sq.ft** (17 sq.m)



**Total area**  
**2,306 sq.ft** (214 sq.m)

Type A - Even floors | Type B - Odd floors | Type C - Garden

## KEY PLAN



All drawings and dimensions are approximate. Drawings are not to scale and are subject to change without notice. The developer reserves the right to make revisions. The units are measured at typical floor in the building and columns may vary in size depending on the floor level. The furnishings and accessories shown are for representation only. The length and width of the balcony varies depending on which floor and which orientation the unit is located.



## EAST RESIDENCE 2

Type 04A | **Two bedrooms**



**Internal area**  
**1,232 sq.ft** (114 sq.m)



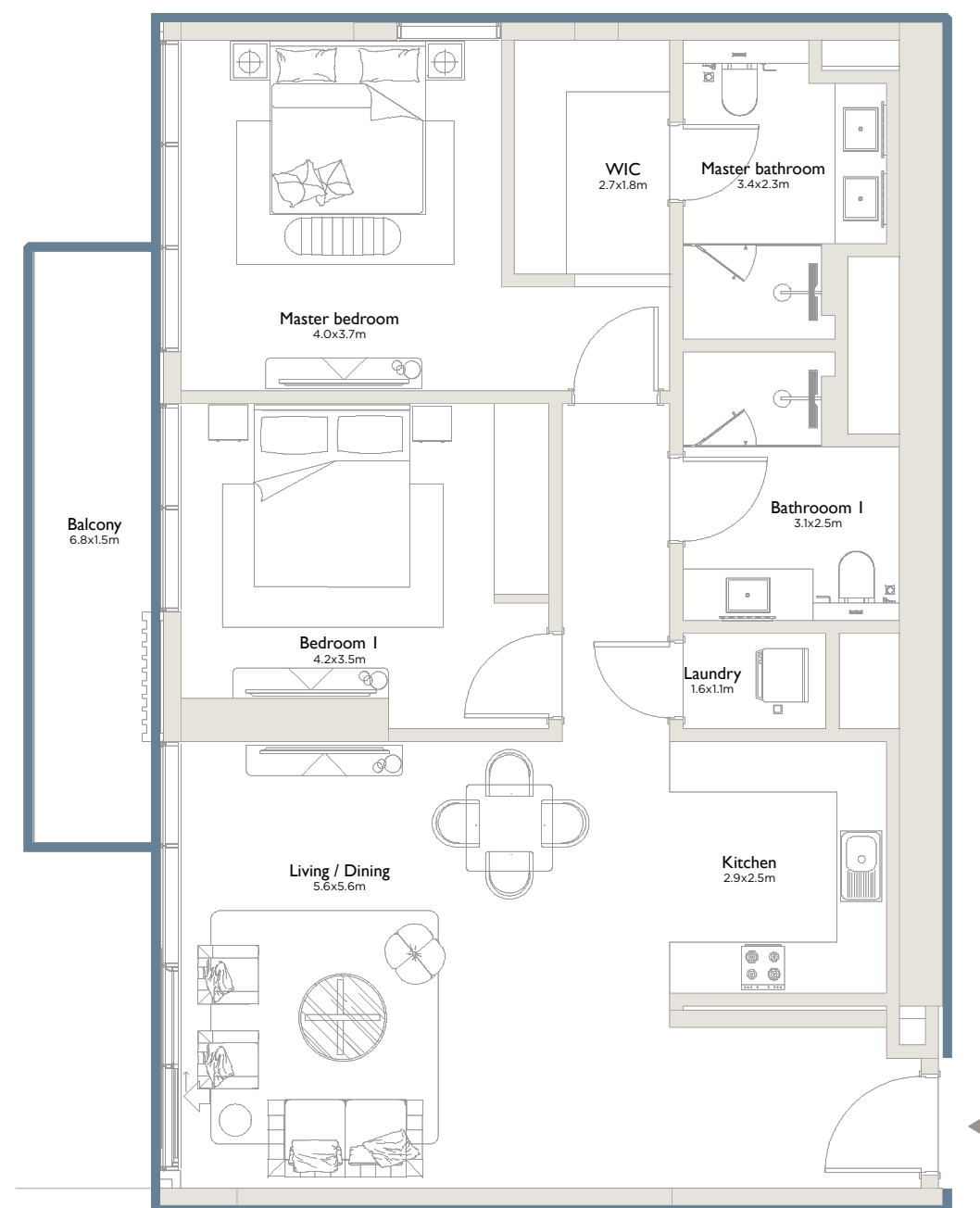
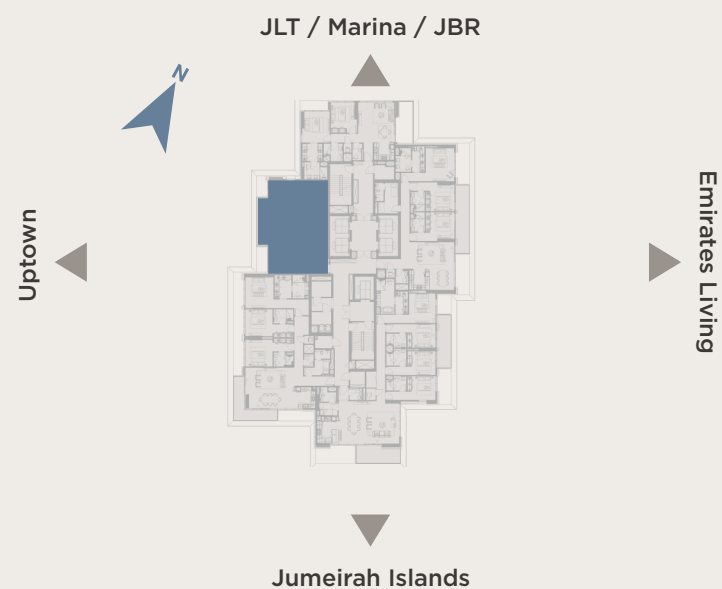
**Terrace area**  
**120 sq.ft** (11 sq.m)



**Total area**  
**1,352 sq.ft** (125 sq.m)

Type A - Even floors | Type B - Odd floors | Type C - Garden

## KEY PLAN



All drawings and dimensions are approximate. Drawings are not to scale and are subject to change without notice. The developer reserves the right to make revisions. The units are measured at typical floor in the building and columns may vary in size depending on the floor level. The furnishings and accessories shown are for representation only. The length and width of the balcony varies depending on which floor and which orientation the unit is located.



## EAST RESIDENCE 2

Type 05A | Two bedrooms



**Internal area**  
1,249 sq.ft (116 sq.m)



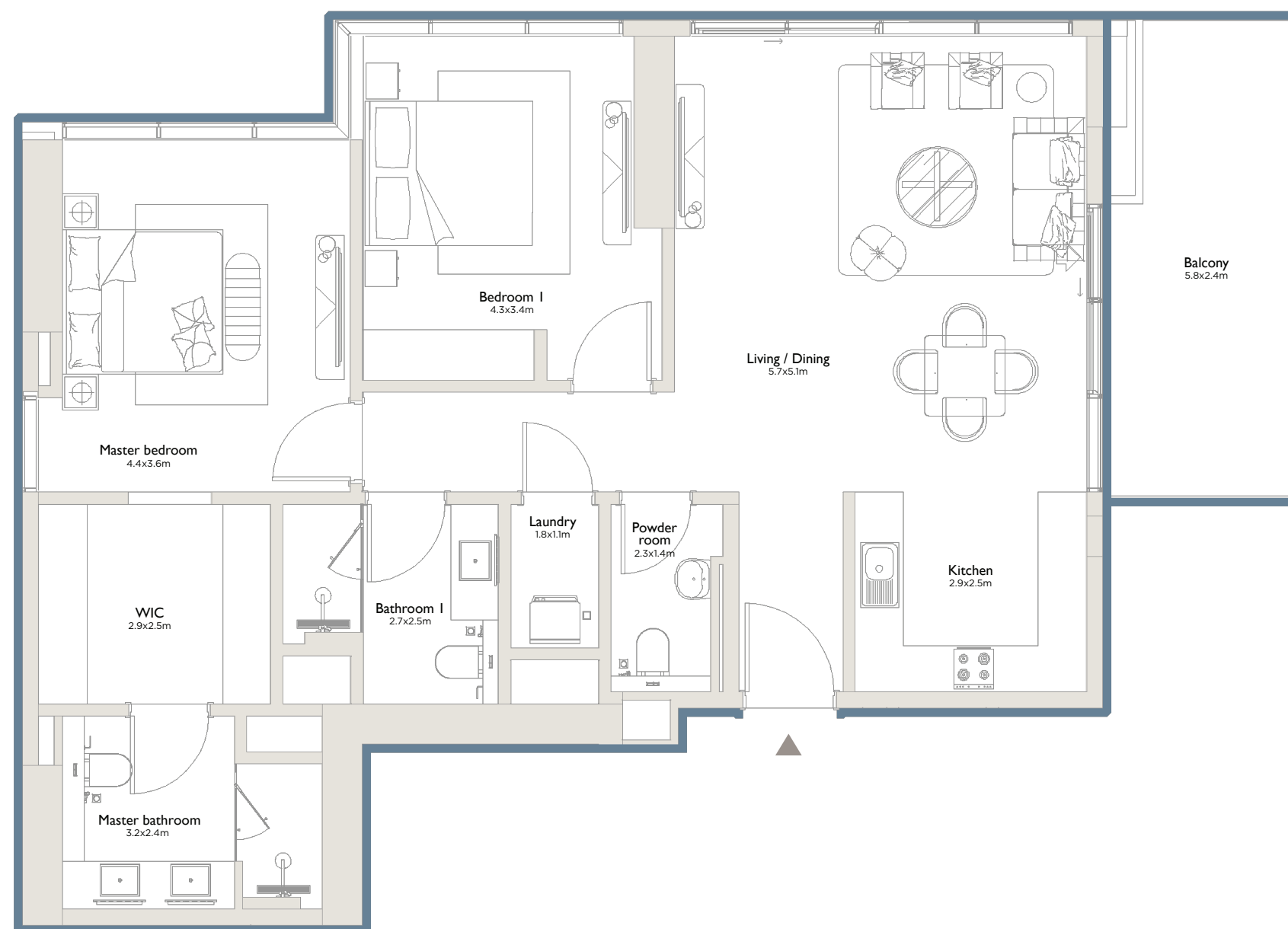
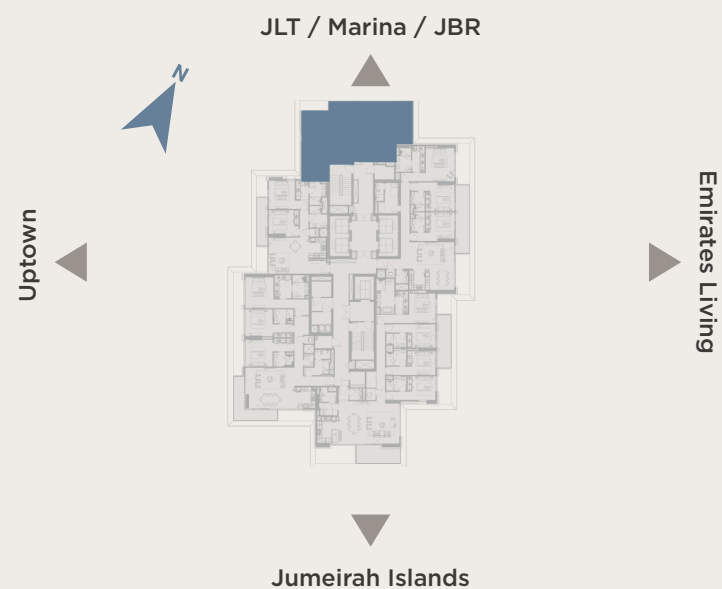
**Terrace area**  
176 sq.ft (16 sq.m)



**Total area**  
1,429 sq.ft (133 sq.m)

Type A - Even floors | Type B - Odd floors | Type C - Garden

## KEY PLAN



All drawings and dimensions are approximate. Drawings are not to scale and are subject to change without notice. The developer reserves the right to make revisions. The units are measured at typical floor in the building and columns may vary in size depending on the floor level. The furnishings and accessories shown are for representation only. The length and width of the balcony varies depending on which floor and which orientation the unit is located.



 EAST  
RESIDENCE 2

---

ODD FLOORS

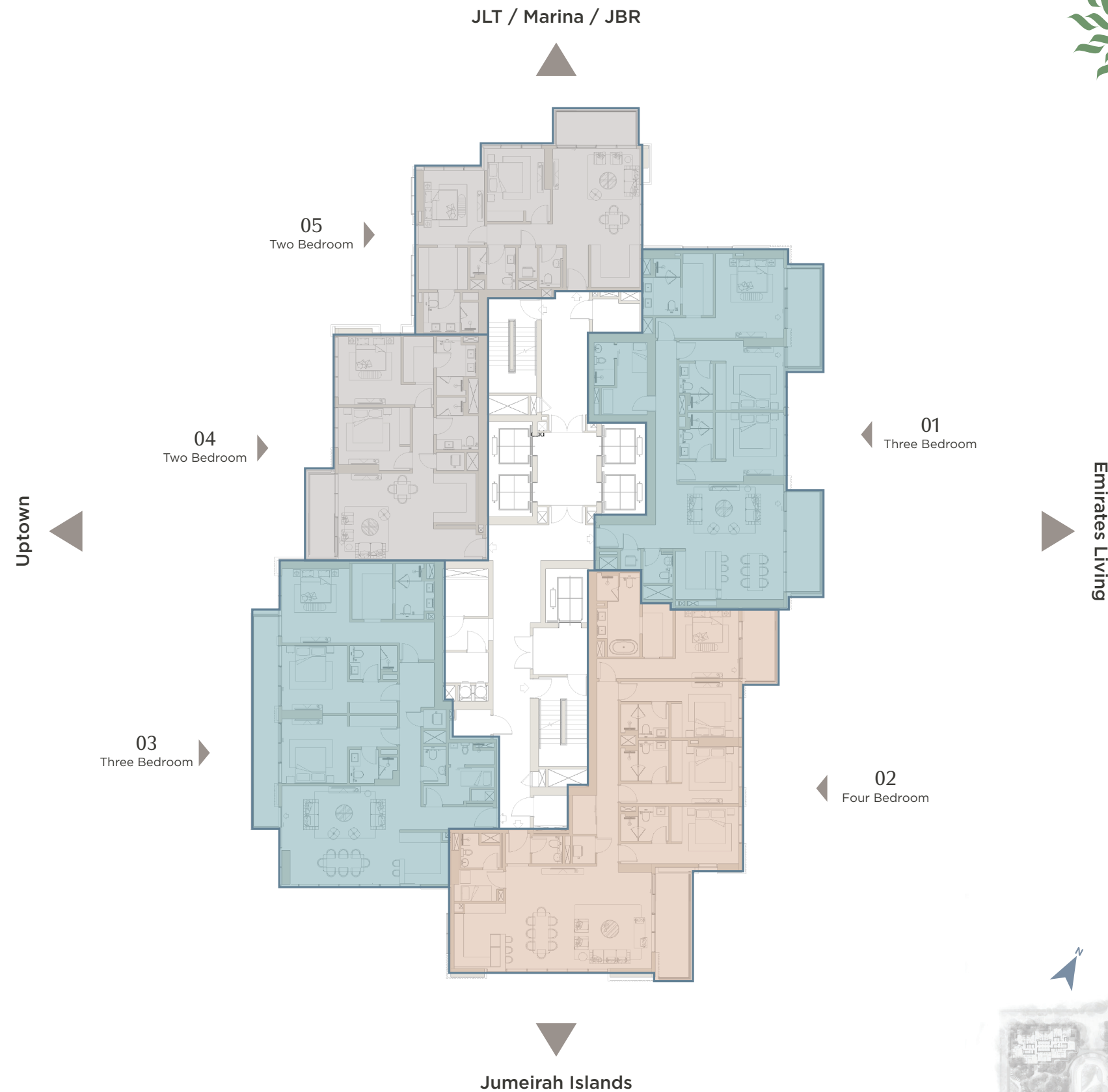




**PALMA™**  
DEVELOPMENT



**SERENIA DISTRICT**  
AT JUMEIRAH ISLANDS



**EAST  
RESIDENCE 2**

**ODD FLOORS**



**KEY PLAN**

All drawings and dimensions are approximate. Drawings are not to scale and are subject to change without notice. The developer reserves the right to make revisions. The units are measured at typical floor in the building and columns may vary in size depending on the floor level. The furnishings and accessories shown are for representation only. The length and width of the balcony varies depending on which floor and which orientation the unit is located.



## EAST RESIDENCE 2

Odd | Full floor



**Internal area**  
**9,116 sq.ft (847 sq.m)**



**Terrace area**  
**919 sq.ft (85 sq.m)**



**Total area**  
**10,035 sq.ft (932 sq.m)**

## FLOOR COMPOSITION

**Total 5 units/floor**



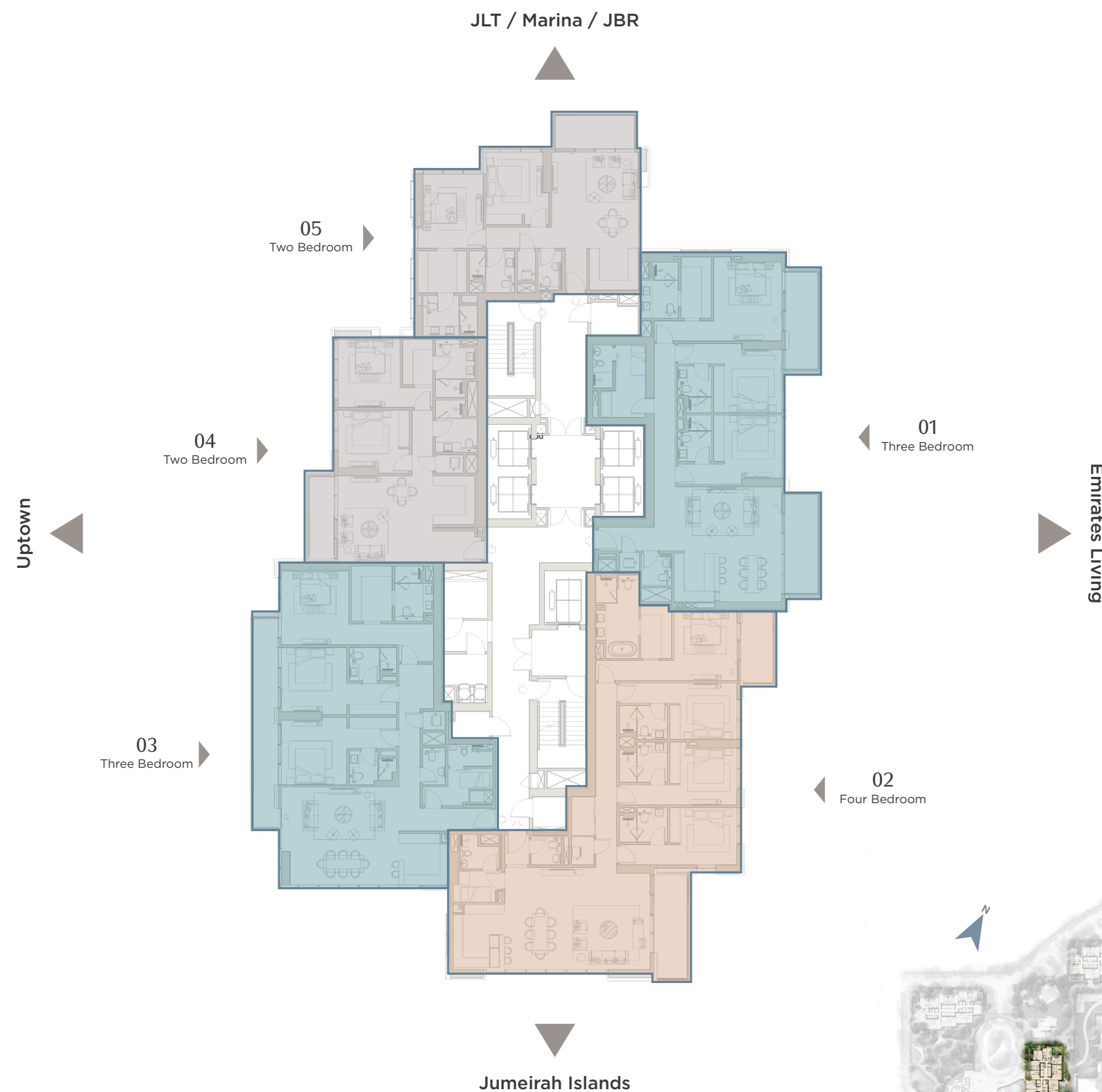
**2 Bedroom**  
**2 Units**



**3 Bedroom**  
**2 Units**



**4 Bedroom**  
**1 Unit**



**KEY PLAN**



## EAST RESIDENCE 2

### Type 01B | Three bedrooms



**Internal area**  
2,031 sq.ft (189 sq.m)



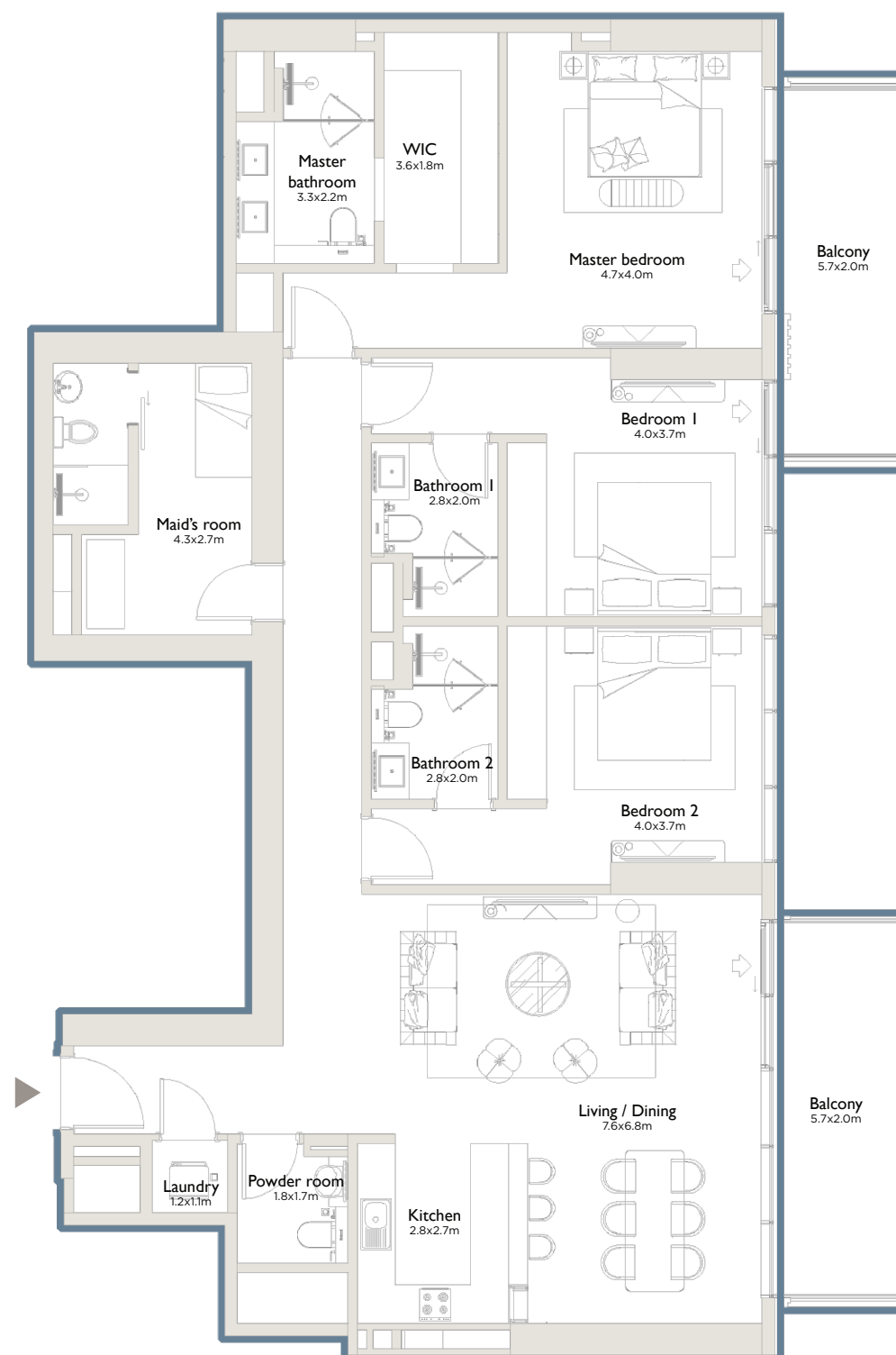
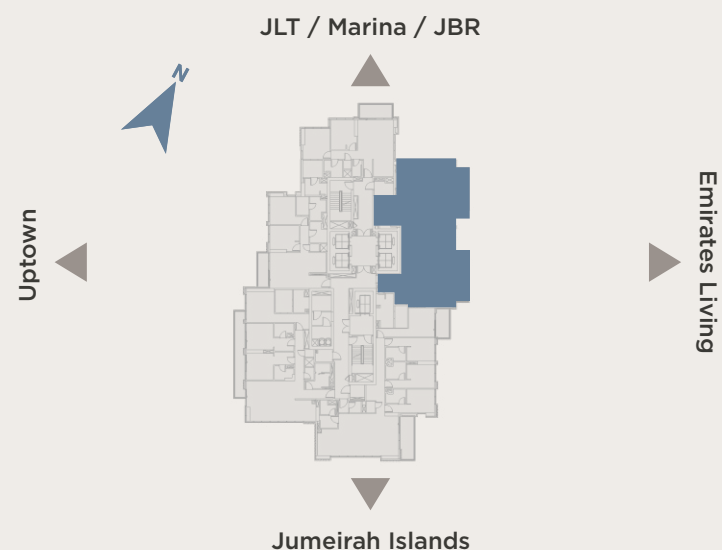
**Terrace area**  
260 sq.ft (24 sq.m)



**Total area**  
2,291 sq.ft (213 sq.m)

Type A - Even floors | Type B - Odd floors | Type C - Garden

## KEY PLAN



All drawings and dimensions are approximate. Drawings are not to scale and are subject to change without notice. The developer reserves the right to make revisions. The units are measured at typical floor in the building and columns may vary in size depending on the floor level. The furnishings and accessories shown are for representation only. The length and width of the balcony varies depending on which floor and which orientation the unit is located.

## EAST RESIDENCE 2

### Type 02B | Four bedrooms



**Internal area**  
**2,490 sq.ft** (231 sq.m)



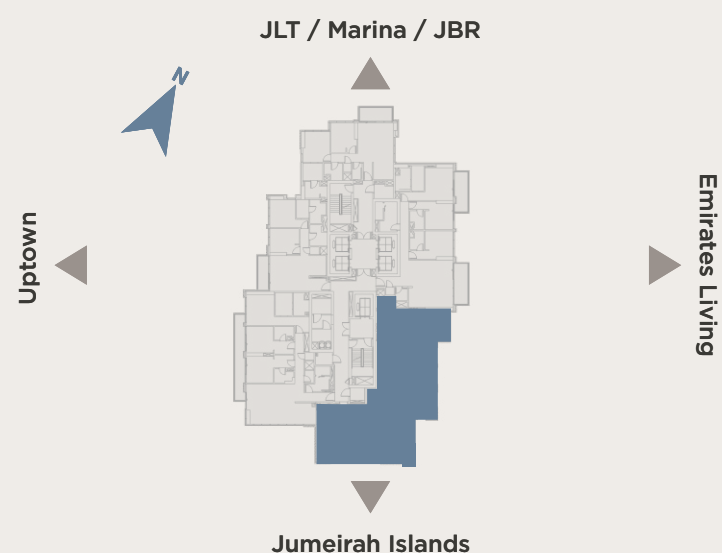
**Terrace area**  
**252 sq.ft** (23 sq.m)



**Total area**  
**2,742 sq.ft** (255 sq.m)

Type A - Even floors | Type B - Odd floors | Type C - Garden

## KEY PLAN




All drawings and dimensions are approximate. Drawings are not to scale and are subject to change without notice. The developer reserves the right to make revisions. The units are measured at typical floor in the building and columns may vary in size depending on the floor level. The furnishings and accessories shown are for representation only. The length and width of the balcony varies depending on which floor and which orientation the unit is located.




## EAST RESIDENCE 2

### Type 03B | Three bedrooms

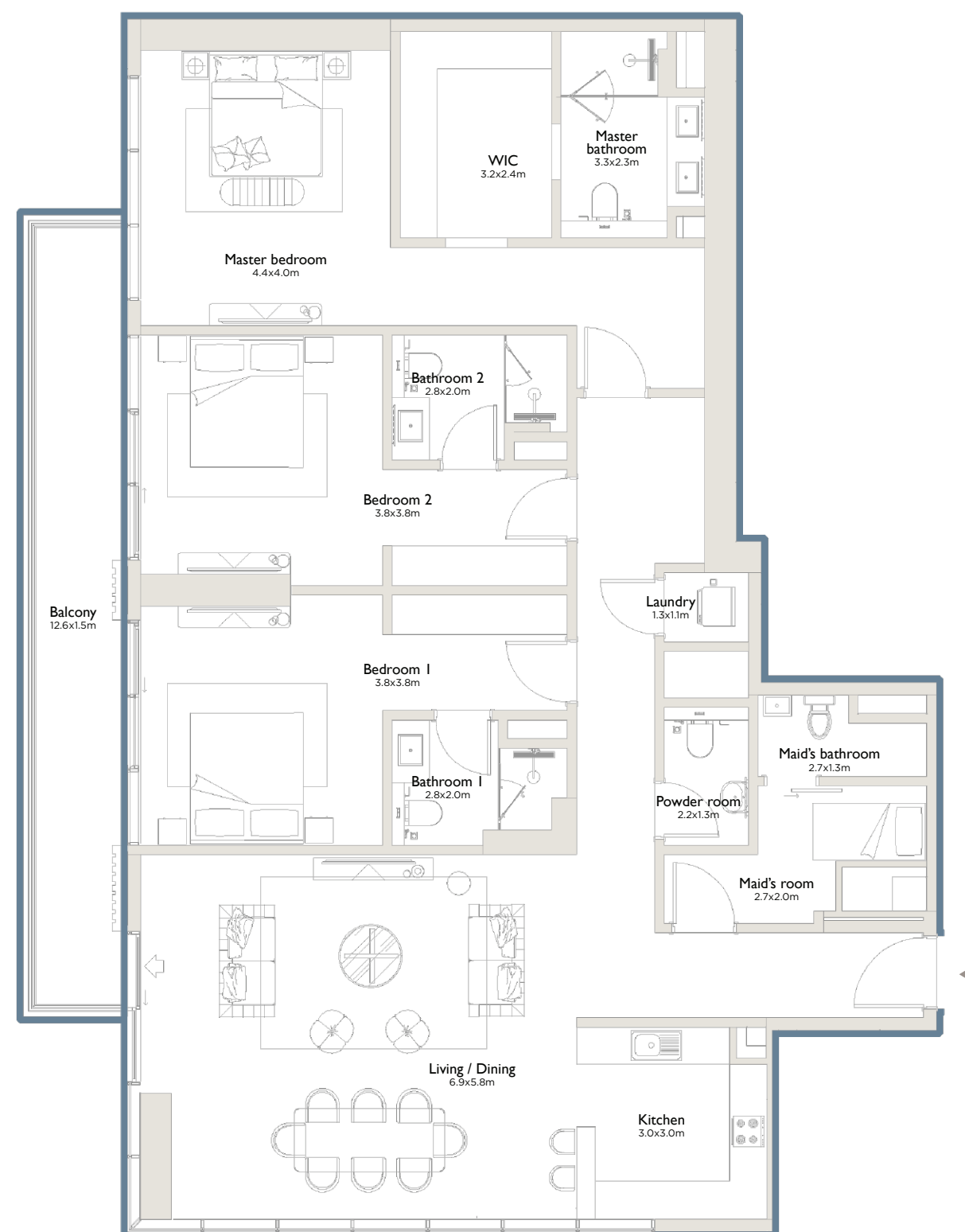
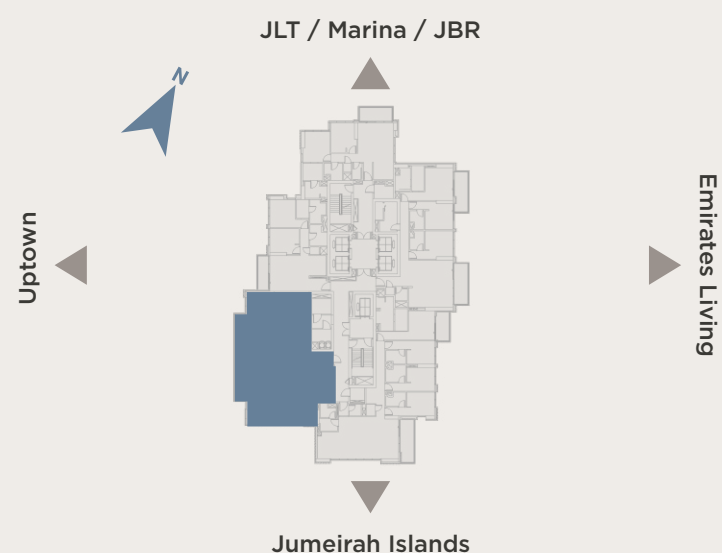
 **Internal area**  
2,119 sq.ft (197 sq.m)

 **Terrace area**  
212 sq.ft (20 sq.m)

 **Total area**  
2,331 sq.ft (217 sq.m)

Type A - Even floors | Type B - Odd floors | Type C - Garden

## KEY PLAN



All drawings and dimensions are approximate. Drawings are not to scale and are subject to change without notice. The developer reserves the right to make revisions. The units are measured at typical floor in the building and columns may vary in size depending on the floor level. The furnishings and accessories shown are for representation only. The length and width of the balcony varies depending on which floor and which orientation the unit is located.



## EAST RESIDENCE 2

### Type 04B | Two bedrooms



**Internal area**  
**1,225 sq.ft** (114 sq.m)



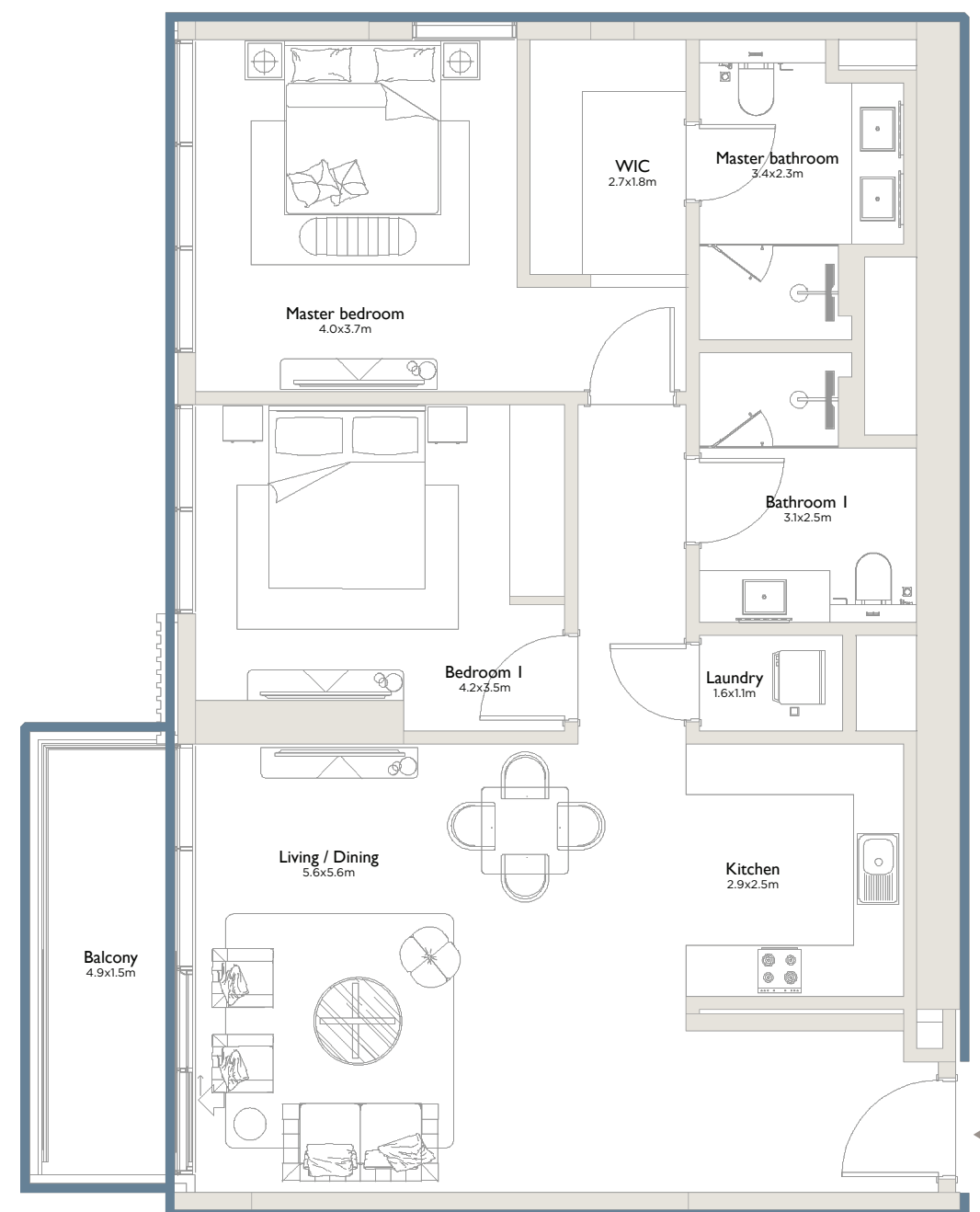
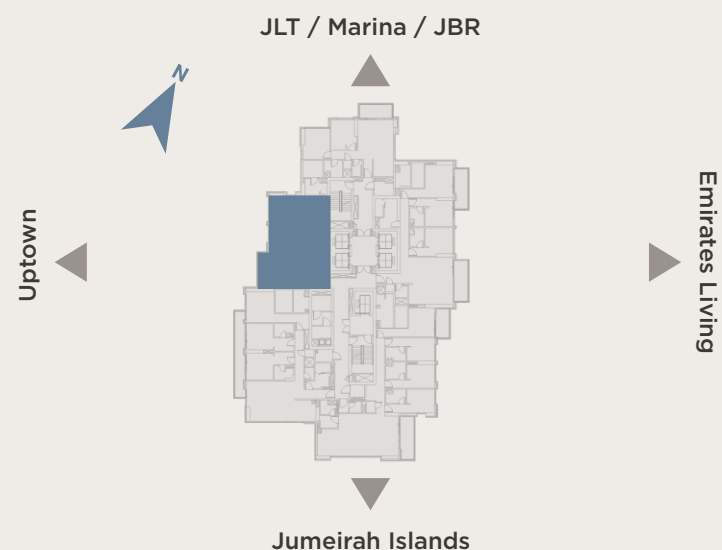
**Terrace area**  
**91 sq.ft** (8 sq.m)



**Total area**  
**1,316 sq.ft** (122 sq.m)

Type A - Even floors | Type B - Odd floors | Type C - Garden

## KEY PLAN



All drawings and dimensions are approximate. Drawings are not to scale and are subject to change without notice. The developer reserves the right to make revisions. The units are measured at typical floor in the building and columns may vary in size depending on the floor level. The furnishings and accessories shown are for representation only. The length and width of the balcony varies depending on which floor and which orientation the unit is located.

## EAST RESIDENCE 2

### Type 05B | Two bedrooms



**Internal area**  
1,251 sq.ft (116 sq.m)



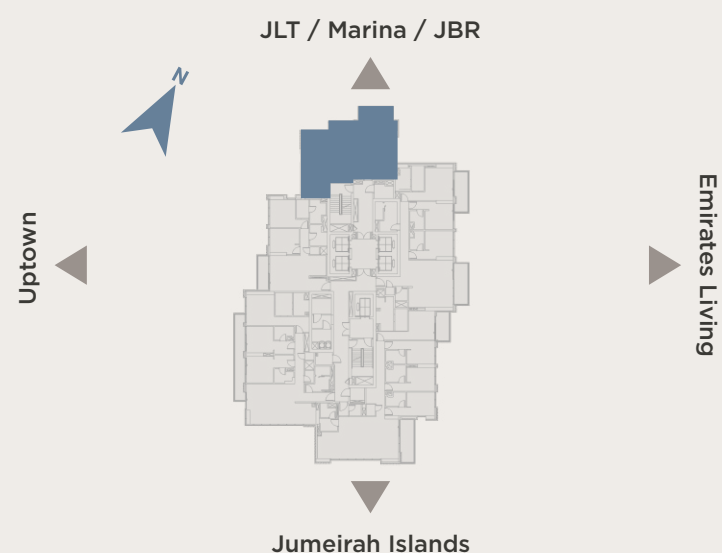
**Terrace area**  
105 sq.ft (10 sq.m)



**Total area**  
1,356 sq.ft (126 sq.m)

Type A - Even floors | Type B - Odd floors | Type C - Garden

## KEY PLAN



All drawings and dimensions are approximate. Drawings are not to scale and are subject to change without notice. The developer reserves the right to make revisions. The units are measured at typical floor in the building and columns may vary in size depending on the floor level. The furnishings and accessories shown are for representation only. The length and width of the balcony varies depending on which floor and which orientation the unit is located.



 EAST  
RESIDENCE 2

---

PODIUM FLOORS

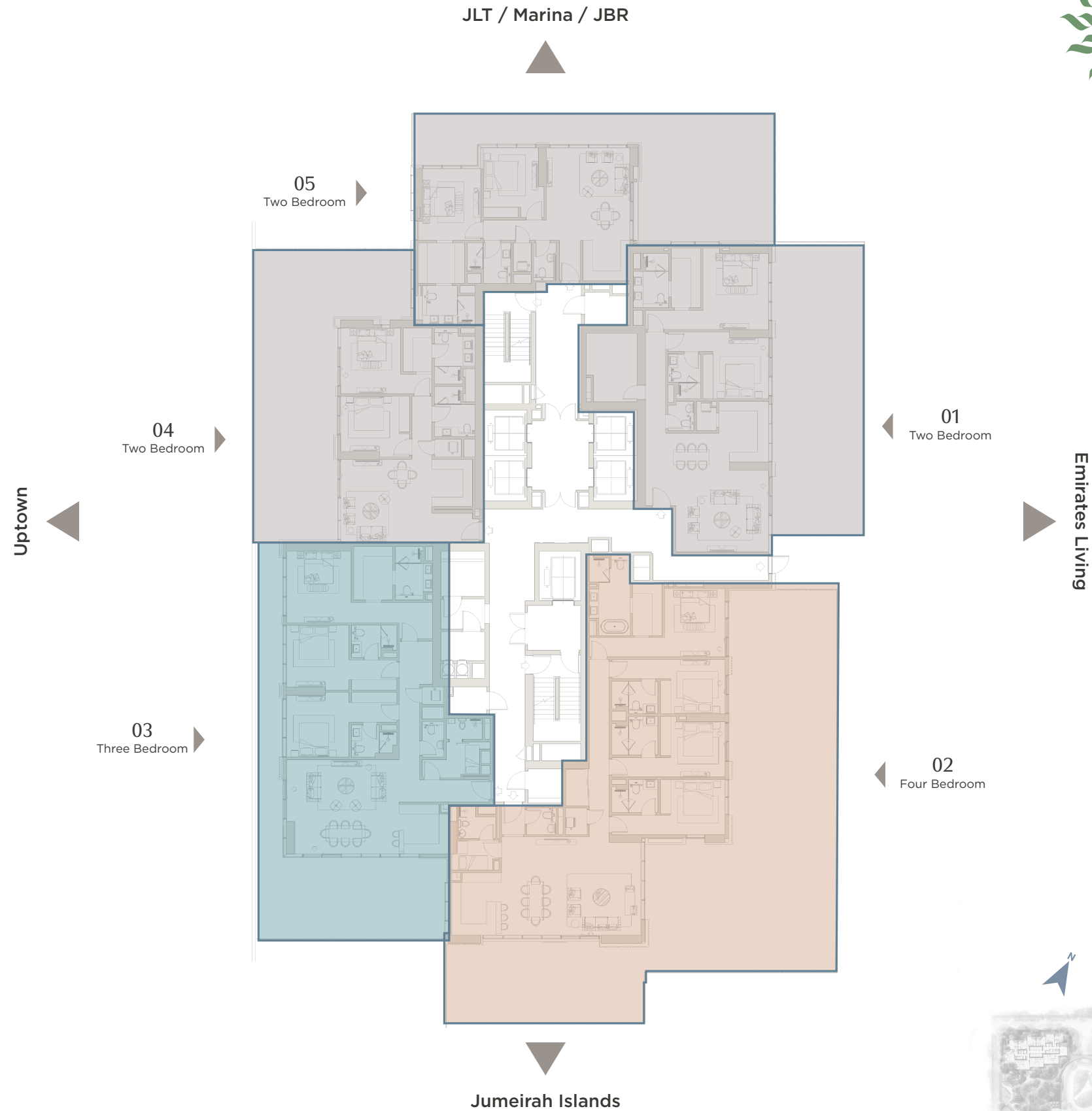




PALMA<sup>TM</sup>  
DEVELOPMENT



SERENIA DISTRICT  
AT JUMEIRAH ISLANDS



EAST  
RESIDENCE 2

PODIUM FLOORS



KEY PLAN

All drawings and dimensions are approximate. Drawings are not to scale and are subject to change without notice. The developer reserves the right to make revisions. The units are measured at typical floor in the building and columns may vary in size depending on the floor level. The furnishings and accessories shown are for representation only. The length and width of the balcony varies depending on which floor and which orientation the unit is located.



## EAST RESIDENCE 2

### Podium | Full floor



**Internal area**  
**8,808 sq.ft** (818 sq.m)



**Terrace area**  
**7,449 sq.ft** (692 sq.m)



**Total area**  
**16,257 sq.ft** (1,510 sq.m)

## FLOOR COMPOSITION

### Total 5 units/floor



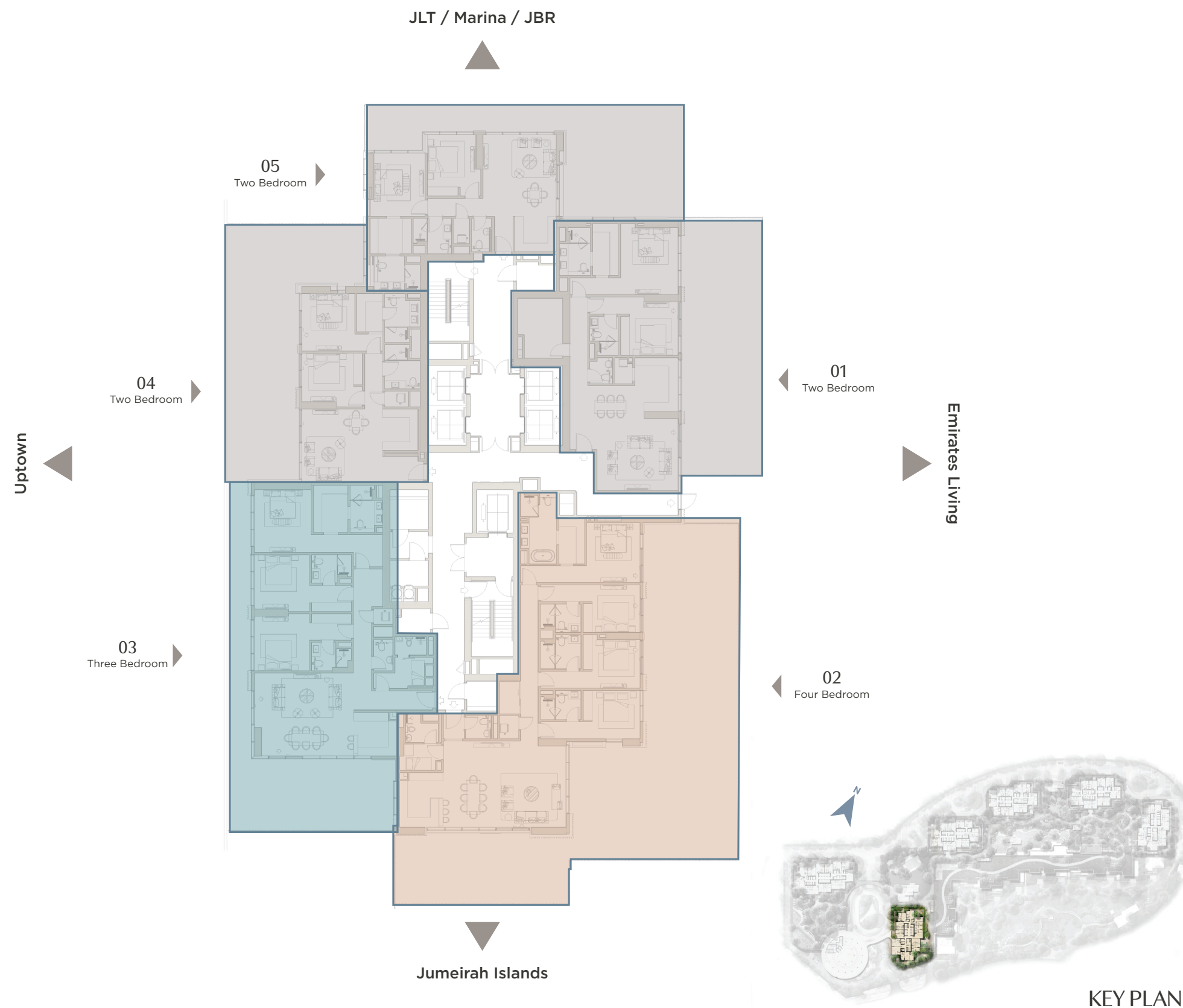
**2 Bedroom**  
**3 Units**



**3 Bedroom**  
**1 Units**



**4 Bedroom**  
**1 Unit**





## EAST RESIDENCE 2

Type 01C | **Two bedrooms**



**Internal area**  
**1,734 sq.ft** (161 sq.m)



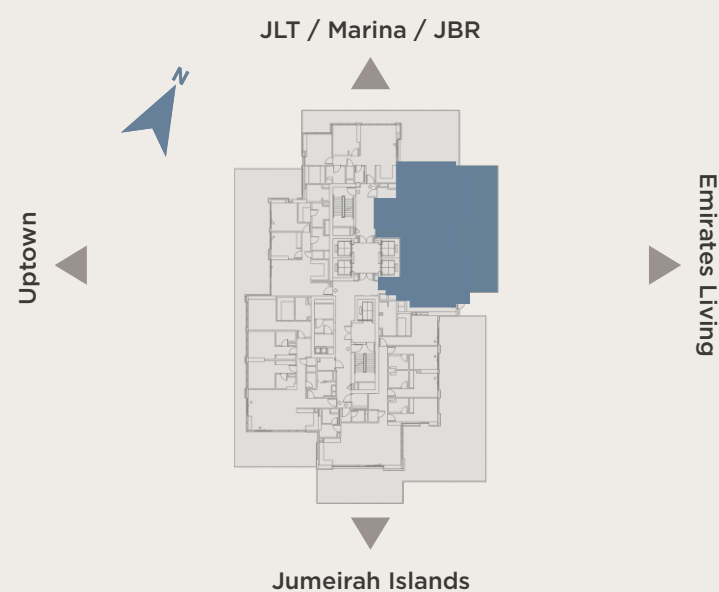
**Terrace area**  
**1,119 sq.ft** (104 sq.m)



**Total area**  
**2,853 sq.ft** (265 sq.m)

Type A - Even floors | Type B - Odd floors | Type C - Garden

## KEY PLAN



All drawings and dimensions are approximate. Drawings are not to scale and are subject to change without notice. The developer reserves the right to make revisions. The units are measured at typical floor in the building and columns may vary in size depending on the floor level. The furnishings and accessories shown are for representation only. The length and width of the balcony varies depending on which floor and which orientation the unit is located.

## EAST RESIDENCE 2

Type 02C | **Four bedrooms**



**Internal area**  
**2,487 sq.ft** (231 sq.m)



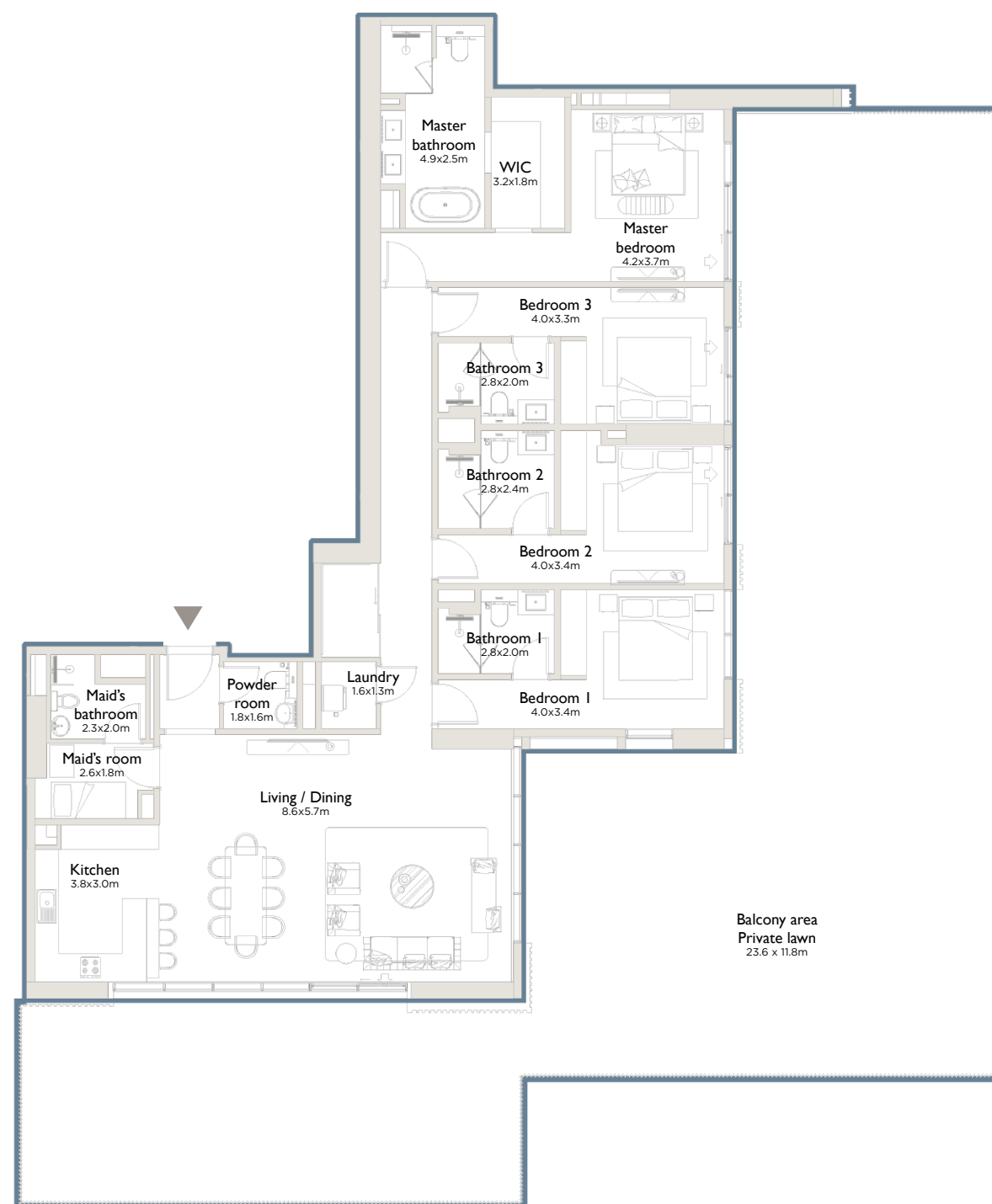
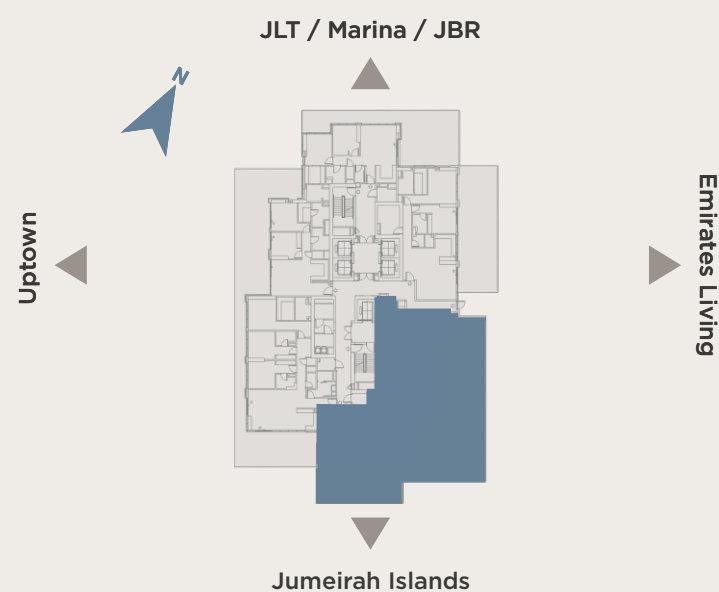
**Terrace area**  
**2,877 sq.ft** (267 sq.m)



**Total area**  
**5,364 sq.ft** (498 sq.m)

Type A - Even floors | Type B - Odd floors | Type C - Garden

## KEY PLAN



All drawings and dimensions are approximate. Drawings are not to scale and are subject to change without notice. The developer reserves the right to make revisions. The units are measured at typical floor in the building and columns may vary in size depending on the floor level. The furnishings and accessories shown are for representation only. The length and width of the balcony varies depending on which floor and which orientation the unit is located.

## EAST RESIDENCE 2

Type 03C | **Three bedrooms**



**Internal area**  
**2,118 sq.ft** (197 sq.m)



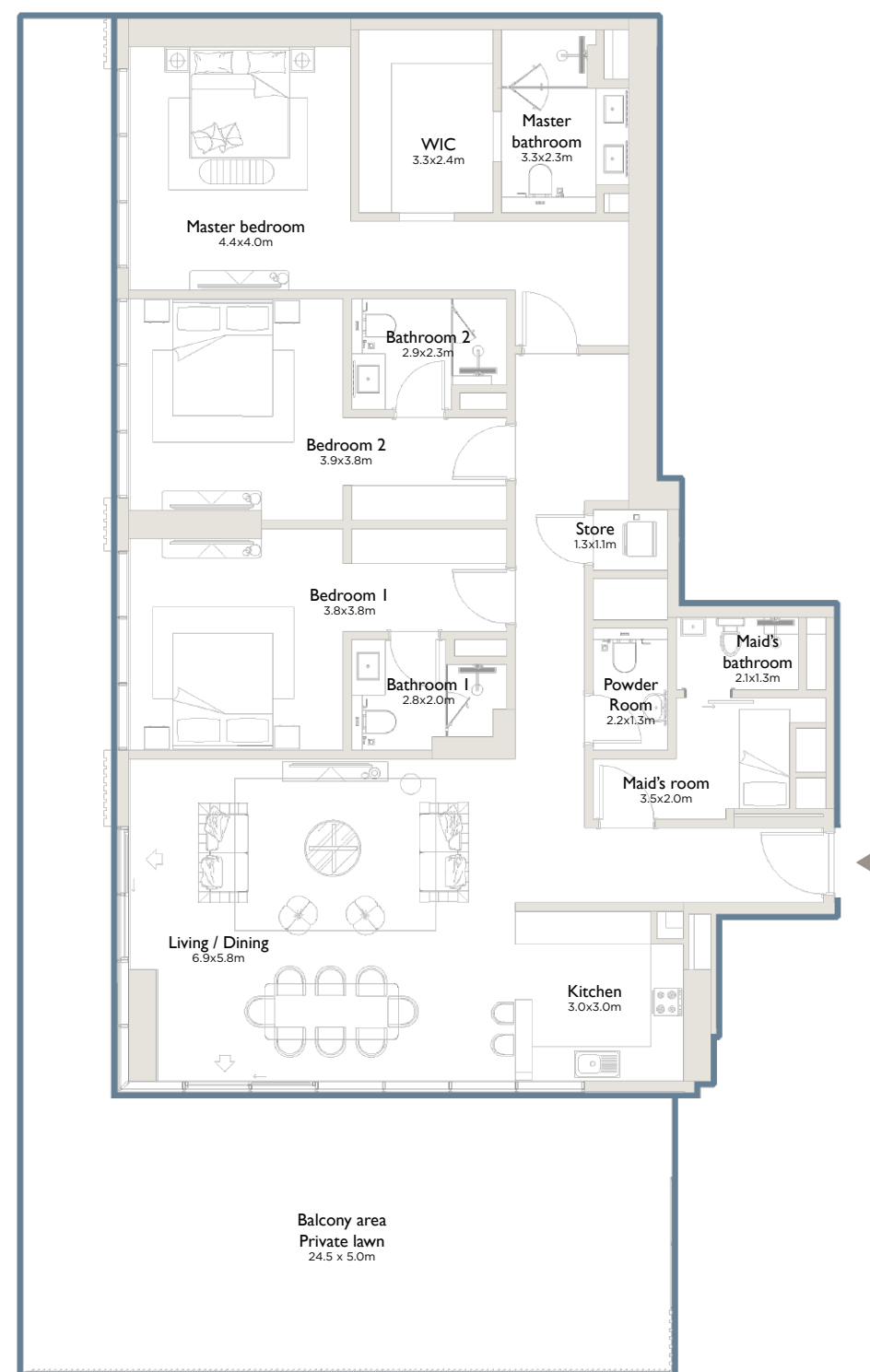
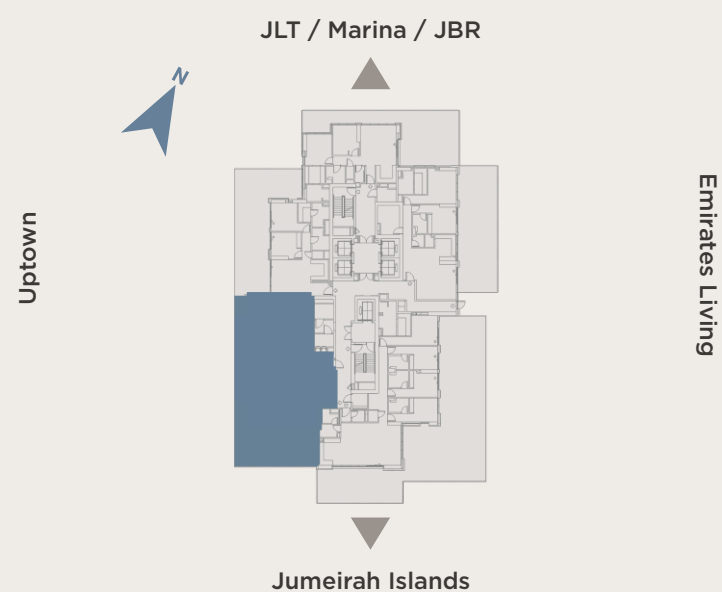
**Terrace area**  
**1,051 sq.ft** (98 sq.m)



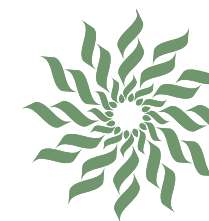
**Total area**  
**3,169 sq.ft** (295 sq.m)

Type A - Even floors | Type B - Odd floors | Type C - Garden

## KEY PLAN



All drawings and dimensions are approximate. Drawings are not to scale and are subject to change without notice. The developer reserves the right to make revisions. The units are measured at typical floor in the building and columns may vary in size depending on the floor level. The furnishings and accessories shown are for representation only. The length and width of the balcony varies depending on which floor and which orientation the unit is located.



## EAST RESIDENCE 2

Type 04C | **Two bedrooms**



**Internal area**  
**1,220 sq.ft** (113 sq.m)



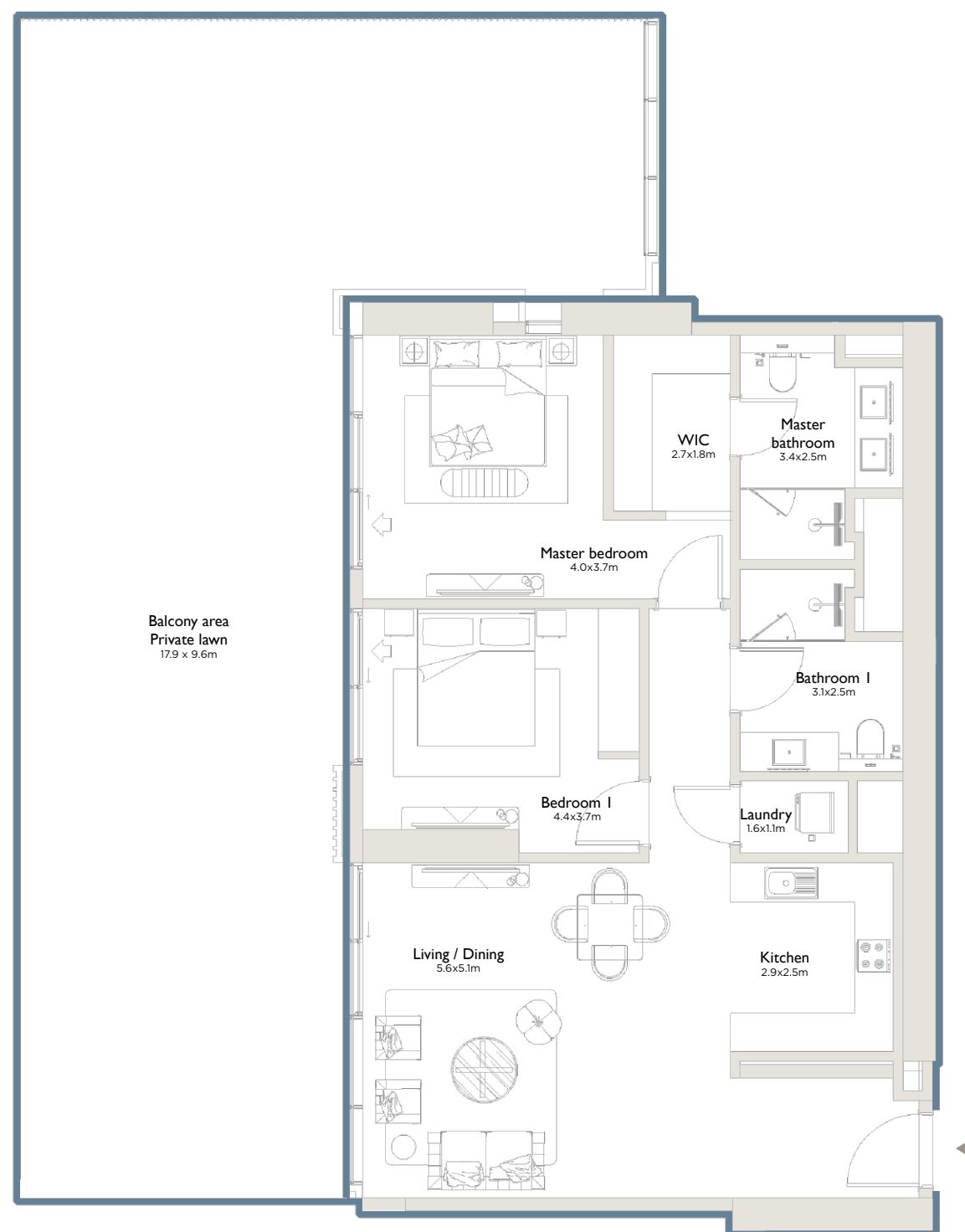
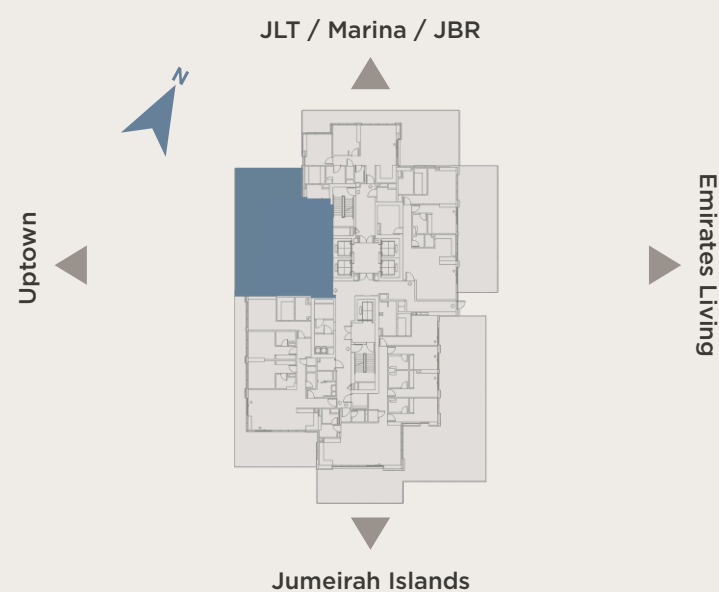
**Terrace area**  
**1,277 sq.ft** (119 sq.m)



**Total area**  
**2,497 sq.ft** (232 sq.m)

Type A - Even floors | Type B - Odd floors | Type C - Garden

## KEY PLAN



All drawings and dimensions are approximate. Drawings are not to scale and are subject to change without notice. The developer reserves the right to make revisions. The units are measured at typical floor in the building and columns may vary in size depending on the floor level. The furnishings and accessories shown are for representation only. The length and width of the balcony varies depending on which floor and which orientation the unit is located.



**EAST  
RESIDENCE 2**

Type 05C | **Two bedrooms**



**Internal area**  
**1,249 sq.ft** (116 sq.m)



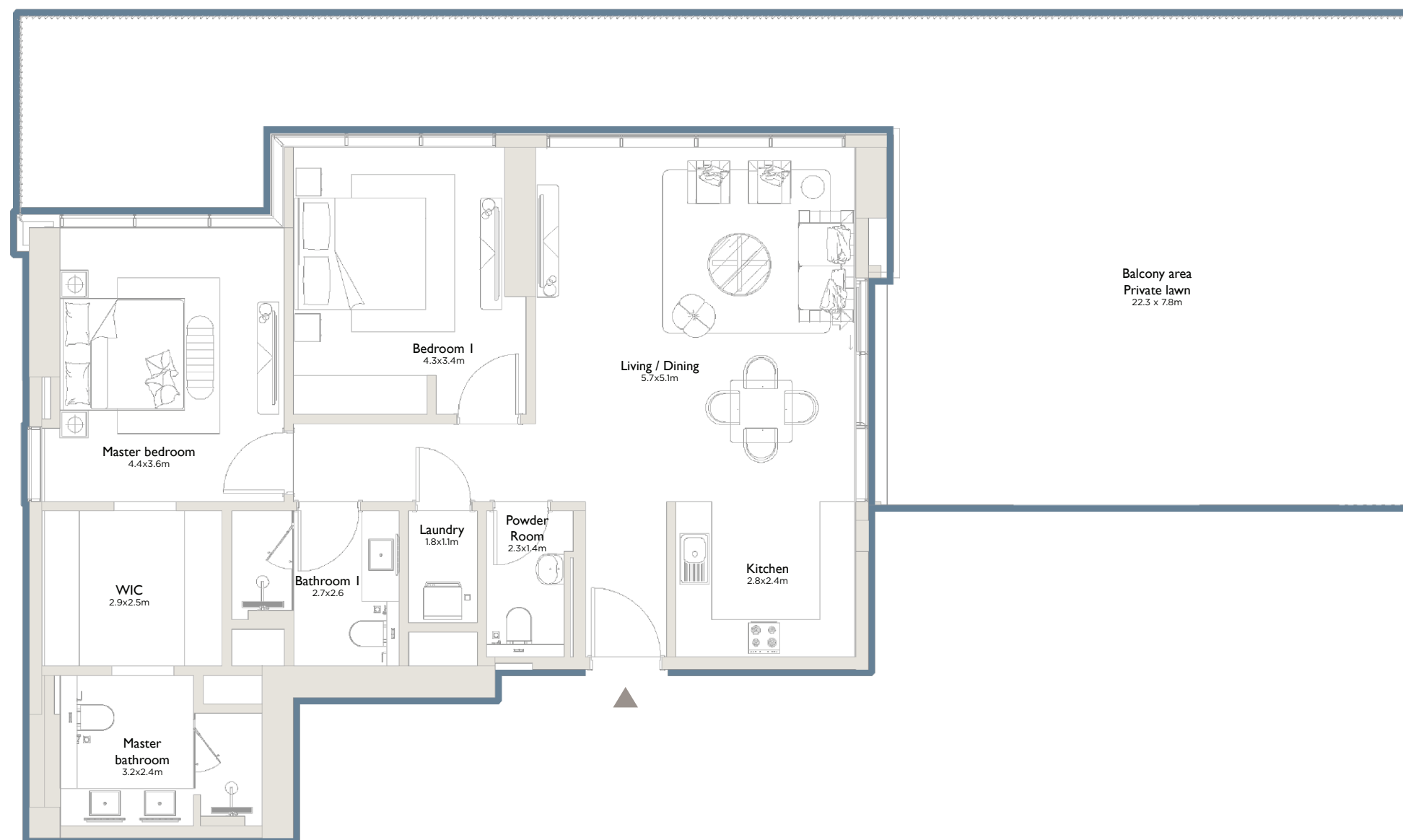
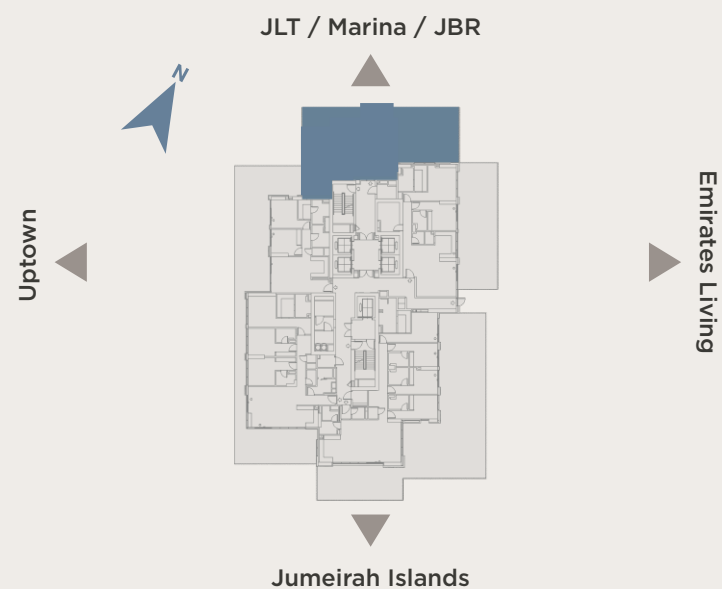
**Terrace area**  
**1,126 sq.ft** (105 sq.m)



**Total area**  
**2,375 sq.ft** (221 sq.m)

Type A - Even floors | Type B - Odd floors | Type C - Garden

**KEY PLAN**



All drawings and dimensions are approximate. Drawings are not to scale and are subject to change without notice. The developer reserves the right to make revisions. The units are measured at typical floor in the building and columns may vary in size depending on the floor level. The furnishings and accessories shown are for representation only. The length and width of the balcony varies depending on which floor and which orientation the unit is located.



**PALMA™**  
DEVELOPMENT

For more information, contact the developer

**800-PALMA (72562) • [WWW.PALMAHOLDING.COM](http://WWW.PALMAHOLDING.COM)**

[serenia@palmaholding.com](mailto:serenia@palmaholding.com)